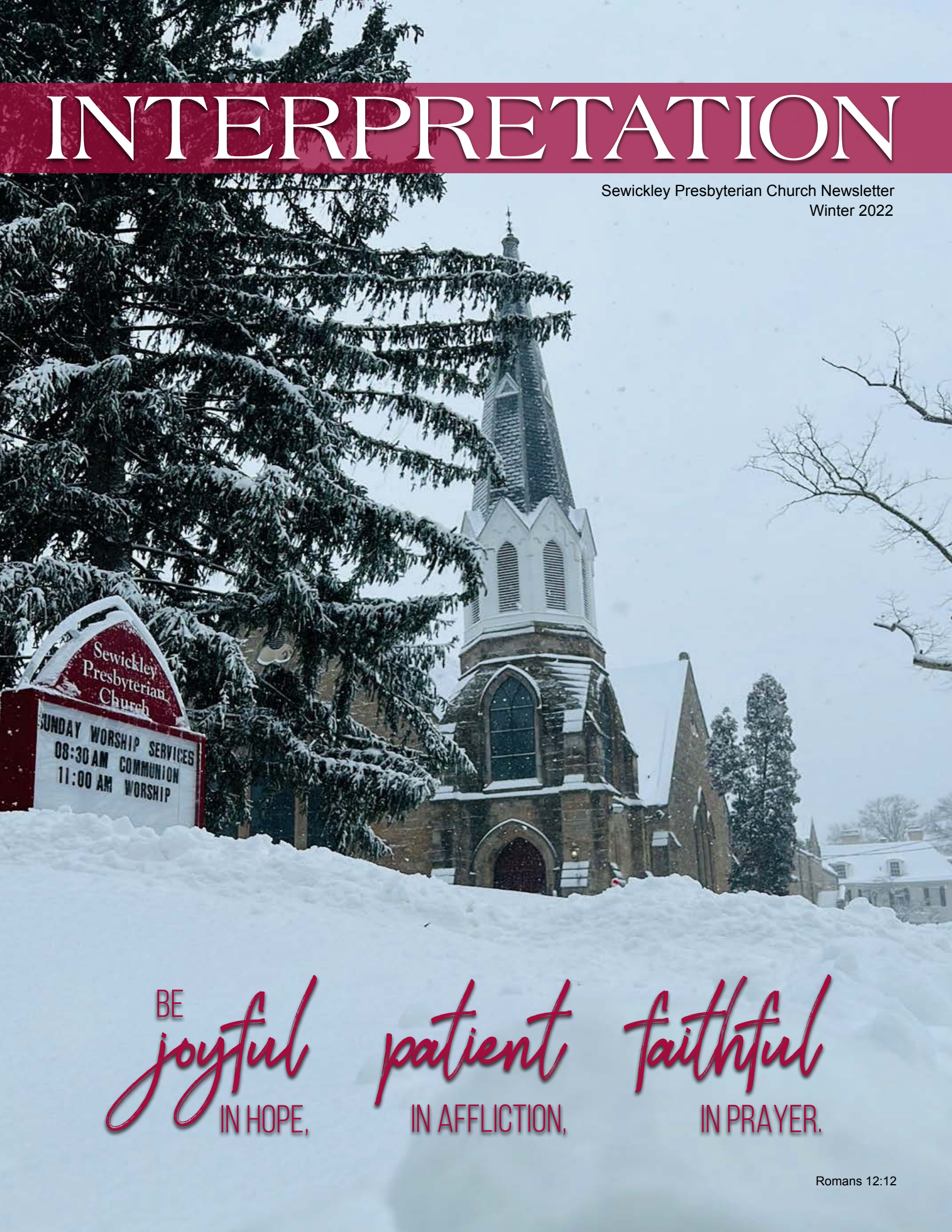


INTERPRETATION

Sewickley Presbyterian Church Newsletter
Winter 2022



BE
joyful
IN HOPE,

patient
IN AFFLICTION,

faithful
IN PRAYER.



OFFICE

Office Hours

Monday - Friday 9 AM - 5 PM

Phone **Fax**

412.741.4550 412.741.1210

Address

414 Grant Street
Sewickley, PA 15143

Web Address

www.sewickleypresby.org

NEWSLETTER

If you would like to make submissions to the newsletter, or if you have any questions contact Jennifer Johnson at jjohnson@sewickleypresby.org.

VISITATION

If you or a member of your family are in the hospital or are in need of prayer, please call the church office to let us know.

SOCIAL MEDIA



SPC STAFF

REV. DEREK DAVENPORT

Associate Pastor/Head of Staff
ddavenport@sewickleypresby.org

SHARON BARBER

Assistant to the Pastor
sbarber@sewickleypresby.org

DAVE BREIT

Media Engineer
dbreit@sewickleypresby.org

RICI BROCKINSON

Broadcast Engineer
rbrockinson@sewickleypresby.org

MIKE CREAMER

Ministry Associate for Youth & Young Adults
mcream@sewickleypresby.org

R. CRAIG DOBBINS, CCM

Director of Music Ministries
cobbins@sewickleypresby.org

JEREMY FISHER

Associate Director of Music Ministries
jfisher@sewickleypresby.org

JENNIFER JOHNSON

Director of Communications
jjohnson@sewickleypresby.org

ERIN LEGHORN

Director of FriendShip Preschool
eleghorn@sewickleypresby.org

LAURA MIKUSH, CCA

Business Administrator
lmikush@sewickleypresby.org

STEPHANIE SMITH

Administrative Assistant
ssmith@sewickleypresby.org

ELIZABETH SZUBA

Youth Program Coordinator
eszuba@sewickleypresby.org

JOEY TOMALES

Custodial Staff



LENT LIKE NO OTHER

By Rev. Derek Davenport

Historically, Lent has been a time of preparation. For forty days (not counting Sundays!), we get ready for Easter. Christians have employed a variety of customs and traditions to observe the season. Some will “give something up” like chocolate or coffee. Others will add something to their routine, like devotional readings or added times of prayer. In our area, many observe Lent through a weekly fish fry or abstaining from eating meat on Fridays. Each of these customs are great ways to prepare for Easter, and each could be the topic of an entire article.

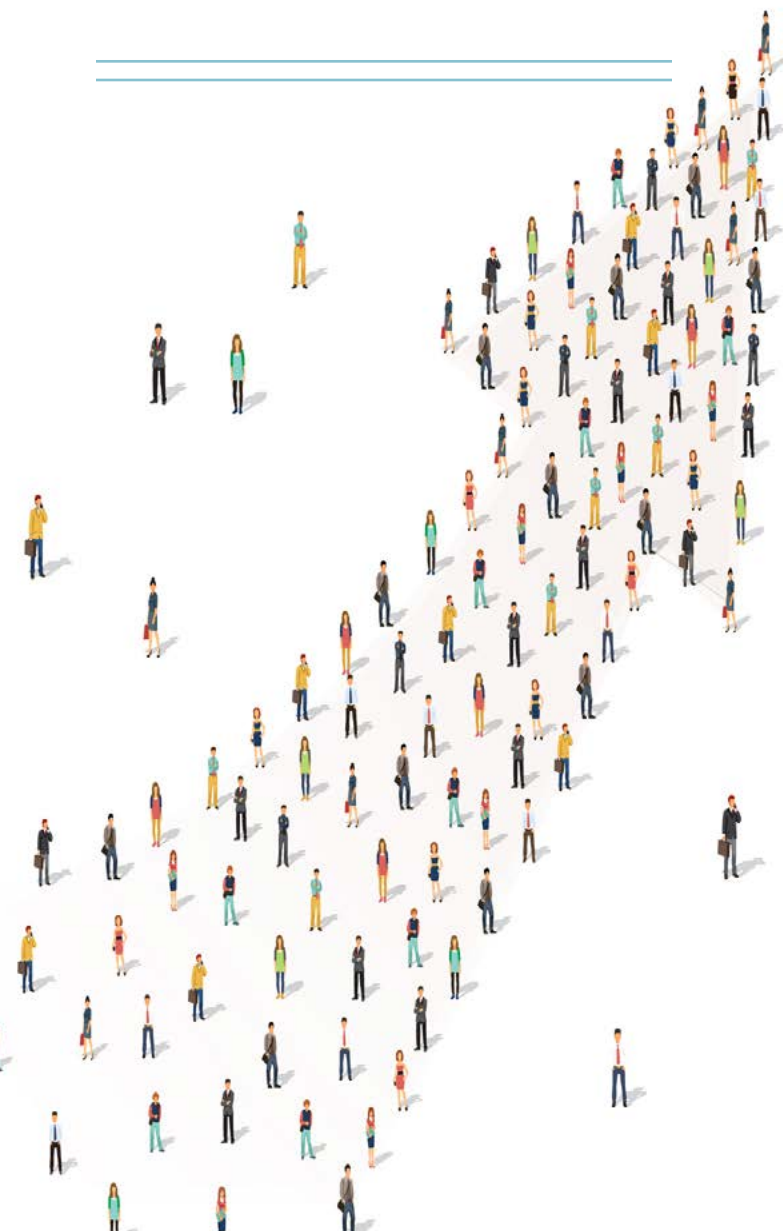
For this year, though, I think Lent takes on special significance. As a congregation, we are in a time of preparation. As you look through the rest of this Interpretation, you’ll see how many things are happening in our church.

This month, we saw an exciting evolution in our evening worship services, which will become more regular throughout Lent. We will see even more outstanding traditional music in our Sunday morning services. Our current staff is changing, with a new title and job description for Mike Creamer as he finishes his seminary studies. Our Session and Personnel committee are also hard at work to expand our current staff. We are preparing for the return of our Lenten Soup Suppers on Wednesday evenings. So much is happening in our church!

All of this is to say nothing of the wider changes around us. We’ve seen restrictions, mandates, and recommendations changing and easing around the country over the past few weeks. Our reopening task force will be meeting in the coming weeks to discuss the changes for our church.

As we look ahead to Easter, as we prepare for what God is doing, there are so many exciting opportunities and changes around us.

This is truly a Lent like no other.



DOLLARS & SENSE

By Laura Mikush, Business Administrator

Like many Presbyterians, you may have wondered, “*Exactly what does Per Capita do?*” Per Capita is the amount of support, per member, that our congregation remits to our Presbytery that is then sent onto our Synod and the General Assembly. This money is part of the glue that holds Presbyterians together. It allows us to work with other Presbyterian churches around the world to further the mission of Jesus Christ.

Below is a breakdown of how Per Capita is calculated:

	2021	2022
Presbytery	\$ 23.41	\$ 23.41
Synod	\$ 2.40	\$ 2.40
General Assembly	\$ 8.98	\$ 8.98
Total	\$ 34.79	\$ 34.79

The rate above is then multiplied by the church’s active membership number from December 31, 2020. For 2022, the rate of \$34.79x800 active members or \$27,832.00. For 2021 the amount was \$34.79x794 active members or \$27,623.26. The rates for 2021 and 2022 didn’t change.

The Pittsburgh Presbytery offers a 5% discount if we pay this amount in full by January 31 of the next year. We have taken this discount for 2021 (\$1,381.16) and plan to do again for 2022 (\$1,391.60).



WEEKLY PRAYER LIST

We are changing the way we publish our weekly prayer list. Typically the prayer list is printed in our worship bulletins and in our weekly email. Since most aren’t using a printed bulletin during the 11 AM worship service, we wanted to find a way to still provide the list and to keep as much confidentiality to our church family as possible.

The prayer list can still be found on the back of the bulletins and in the weekly email, but now you may also find a paper copy of the prayer list in the Robinson Room, near the coffee station. We will update the list when any change occurs.

We hope you will use the list to pray for our church family and friends throughout the week.

FOUNDERS' DAY



On Sunday, February 20th we will celebrate our Founders' Day. Our church is 184 years old this month! As we look forward to our future, it's nice to be able to look at our past to learn about how and why choices have been made from time to time.

There are many rooms in our church building that have meaningful reasons for their names, the way they are decorated, and what the space is used for. On Founders' Day we will learn more about the memorial plaques that line the walls of our sanctuary and focus on one that is dedicated to Alfred H. Johnson, a past choir director of SPC.

Another item that most of us might not know about is the bell in our bell tower. Rev. Davenport and our custodian, Joey, took a field trip to the top of the tower recently to take pictures to share. This prompted some discussion about the bell's history.

The church building was completed in 1861 at an approximate cost of \$100,000. The finishing touch was the installation of the bell in 1871. The bell was a gift from Mr. Cochran Fleming in memory of his brother, John. The bell weighs 3,300 lbs. and the inscription is to the right.

In 2008, the bell was inspected by the Verdin Company (Cincinnati). The bell was discovered to have an 8-inch hair-line crack at the area where the clapper hits the bell. There were springs that would cushion the blow of the clapper on

the inside of the bell, but they had long since broken off and were found laying on the floor underneath the bell. The bell still produced a ringing sound, in spite of the crack and lack of springs. In order to preserve the bell, the clapper was removed and ropes that were hanging in the narthex, and were once used to ring the bell, were also removed. The bell has not been in use since this time.

Fourteen years ago, it was estimated that it would cost \$100,000 to replace the bell. Along with that cost, additional funds would be needed to replace the tower to accommodate a new bell. Other ways to use the bell were suggested, such as an external device that could be remote controlled from the back of the sanctuary.

There are no plans to replace the bell or structure at this time.

**CAST BY
A. FULTON SON & CO.
PITTSBURGH, PA
A.D. 1871
PRESENTED TO THE
PRESBYTERIAN CHURCH OF SEWICKLEY
IN MEMORY OF
JOHN FLEMING
MDCCLXXV
VITOS VOCO - MORTUOS PLANGO**



FRIENDSHIP & WINTERTIME

The past few months seem to have flown by at FriendShip Preschool! Our classes have all settled into a wonderful rhythm. We can already see how much our little ones have grown since the beginning of the year. It's been a year full of adjustments, but our teachers, students, and families have risen to the challenge. I am so impressed by how well everyone has worked together and adapted.

In December, our Pre-K and FriendShip II classes put on their annual Christmas programs. The teachers helped the students work hard to learn and perform several songs for their families. Both programs were sweet, heartwarming, and adorable! To ensure that everyone could enjoy the program safely, we moved the programs from the Robinson Room into the Sanctuary. While we missed having the beautiful Christmas tree in the background, using the Sanctuary allowed us to stream and record the performances so that family members who were out of town or just unable to join us in person, could still enjoy the shows! Thank you to Dave Breit, Jennifer Johnson, and Rici Brockinson for making that happen!

A few of our classes also participated in Chapel Time in December. Barb Kennedy prepared and narrated a dramatic

retelling of the Nativity which was enjoyed by all. She was joined by a few special guest performers Mike Creamer as King Herod, Dave Breit as Joseph, and Erin Leghorn as Mary. Once again, the children loved singing along with Jeremy Fisher and his guitar. We are so grateful for the time these staff members give to our little ones!

In January, FriendShip opened registration for the 2022-2023 school year! It feels like just yesterday that I was opening registration for this year and preparing to reopen our doors, but I guess the saying is true - time flies when you're having fun! We've had a great response so far, but there are still openings in some of our classes. If you are interested in learning more about our programs or registering a child, please email Erin Leghorn at eleghorn@sewickleypresby.org for information.

Thank you to our entire church staff and congregation for loving us and supporting us this past year! We are so grateful to be a part of Sewickley Presbyterian Church.

-- Erin Leghorn
Director of FriendShip Preschool



WORSHIP SERVICE

March 2 | 12 PM
Sanctuary



STAFF ROLE CHANGE

by Rev. Derek Davenport

The last few months have been quite unusual for our congregation. As we know, many of our staff positions are changing for a variety of reasons. All of them have been celebratory, but they still result in transition.

With that said, it's important to keep everyone informed about some of the changes as they are occurring. Over this past month, we've had one major change to announce. That's a new title for Mike Creamer.

Over the past several years, Mike has been diligently working not only with our youth, but on his courses. As you may be aware, over the past few months, Mike has finished his final seminary classes and passed his ordination exams. Through his work, he has gained new education, experience, and skills. You also may have noticed that he has been slowly expanding his work at SPC, doing additional preaching and worship planning.

This past month, our personnel committee worked with Mike to draft a job description that allows him to continue his outstanding work with our youth, but also gives him an opportunity to expand his work into additional areas. Session approved the change at our February meeting. Going forward, Mike will now be serving as our Ministry Associate for Youth and Young Adults.

With this change, here are some likely questions and answers that will arise:

Q: Will Mike keep working with our youth?

A: Absolutely! Over the past few years, Mike and Elizabeth Szuba have built great programs and structures that they will continue to run.

Q: What new responsibilities will Mike have?

A: Some of the key changes will include work with college students and young adults – work that Mike has been quietly beginning over the last few months.

Q: How will this look different in the weeks ahead?

A: You will begin to see Mike a bit more in visible leadership roles for our whole congregation, including education and worship.

Q: So, if he's finished seminary and has a new title, does this mean that Mike is a pastor now?

A: No. Our process does not allow churches to ordain people without a search process.

Q: What will Mike's main priorities be?

A: Mike's main priority will still be working with our youth, but he will expand his work to include young adults and more worship and leadership for the whole congregation.

Q: Do we still need to hire an associate pastor?

A: Yes. This is an expansion of Mike's work. We do not expect him to take on the role of an associate pastor.



BIBLICAL STORYTELLER VISITS ON MARCH 20

Biblical storyteller Donna Marie Todd of Black Mountain, North Carolina will participate in our worship services on Sunday, March 20, as well as perform a concert in the Sanctuary at 2 PM that afternoon.

Donna Marie is an author, storyteller, podcaster and transformational speaker. Known for her deeply vulnerable and connective personal narratives, Donna Marie entertains, brings powerful insights, and helps her audiences feel connected, empowered and energized.

Widowed in 2011, she is the author of *Navigating Loss: A Survival Guide for the Newly Widowed* and a Certified Grief Recovery Specialist. This book was adopted in 2021 by UPMC for its bereavement groups.

A multi-faceted artist, she delivers perfectly-crafted performances, conference keynotes, and special events that combine her talents as a speaker, writer, storyteller and singer. Her combination of storytelling and singing has earned her the description of “The Singer of Stories.” She headlines storytelling festivals, corporate events, retreats, and conferences. She is President of the Asheville Storytelling Circle and active in storytelling organizations including the National Storytelling Network, the North Carolina Storytelling Guild, and the Network of Biblical Storytellers, Int’l., where she has served as the editor of their magazine, *The Biblical Storyteller*, for over a decade.

We are excited to welcome Donna to our church. Be certain to invite your family, friends, and neighbors.

ADVENT & CHRISTMAS SERVICES RETURNED

By Craig Dobbins, Director of Music Ministries

The Worship & Music Committee was thrilled that, following a two-year absence, in November and December in-person and live-streamed services of The Word Sung and the Advent Lessons & Carol Service were able to be held. In addition, they were thrilled to offer two in-person and live-streamed services on Christmas Eve. If you missed these services, they are able to be viewed on the church’s website in the archived service files.

HANDBELLS IN WORSHIP

By Craig Dobbins, Director of Music Ministries

The Calvin Handbell Choir will share their gifts in the 11 AM worship services on Sundays, March 6 and May 1. Although it’s a more satisfying sound to hear them perform in person, plan on joining us online if you aren’t able to attend.

CRAIG DOBBINS IN RECITAL

Following a two-year absence, the Coraopolis United Methodist Church will resume their weekly midweek musical performances on Wednesdays in Lent. Craig Dobbins has been invited to perform a thirty-minute organ recital of seasonal music on Wednesday, March 16 at 12 PM. CUMC is located at 1205 Ridge Avenue next to the Coraopolis Municipal Library. Invite your friends, family, and neighbors to join you in supporting him.



stewardship 2022

CELEBRATING YOUR GRATEFUL RESPONSE

By Don Birnie, Stewardship Chair

We've wrapped up the 2022 stewardship campaign as of January 31. There are so many wonderful things going on at SPC right now, and your generosity in confirming your financial support for 2022 is one of the most encouraging. Thanks to all who have pledged, and particularly those who increased their pledge over last year. 41% of pledges received were higher than in 2021. This increased giving is why total pledges were even with last year. As a result, the Finance Committee was able, with some specific cuts, to balance the 2022 budget and increase salaries for our employees! Our mission goes on.

You might ask, "Shouldn't we be increasing support for our mission from year to year?" Well, of course that would be wonderful. And hopefully we'll be able to do that for 2023! But this year breaking even with 2021 is something to celebrate, and here's why!

We've done this while our church has faced several challenges. Two years of dealing with COVID, caused fewer people to attend Sunday services in-person, and resulted in reducing the number of services to 2 instead of 3 each week. In addition, Covid significantly limited the number of new members received into our church family, which made it harder to grow the number of pledges received. And to our disappointment two of our pastors moved on to pursue wonderful career opportunities within 5 months. Fortunately, we've had Derek's steady presence to guide us. His high energy, joyful leadership has been a Godsend!

And there are additional challenges every year to breaking even with the year before. For several reasons, some people that pledged the previous year weren't here to pledge this year. And some of our brothers' and sisters' budgets were a bit tighter this year than last. But in spite of all this you kept giving. This congregation's "Grateful Response" in

stewardship has been a source of optimism as we head into the new year!

Here's how the numbers all worked out. Only 220 pledges were received compared to 239 last year. Fortunately, the average pledge grew to \$5,325 compared to \$4,974 in 2021. Out of 220 pledges received, 89 increased and only 19 decreased. In the end our total amount pledged reached \$1,171,463, essentially matching last year.

So, make no mistake about it! Your generosity in 2022 is something to celebrate! Congratulations SPC!

Although the Stewardship Campaign has not yet been completed, the results so far demonstrate your generosity. Our average pledge increased 10% above last year. And 40% of pledges received to date were increased compared to the year before. THANK YOU VERY MUCH!

While we'll fall short of our goal of \$1,296,000 for total amount pledged, we expect the result for 2022 be very close to 2021, which was - \$1,188,889. As of January 5, we were only \$33,416 away from matching last year's result. And with regard to the number of pledges, 212 have been received so far. That's only 27 short of last year's total of 239. Hopefully, we'll reach or exceed 2021 results. So, if you haven't pledged yet, your help is needed. Please consider making your pledge before the end of February.

Each of us on the committee want to thank you for your support, and let you know how proud we are of our church! We're already beginning to think about 2023. Your input will be appreciated! If you have any thoughts about how we can improve our next campaign, let one of our committee members know.



YOUTH SUNDAY COLLECTION

February 27 only!

Along with leading worship, our Youth will also be hosting a food drive to support the YMCA Little Pantry Project. With growing food insecurity in our community, the YMCA partnered with our church, the Sewickley Valley Community Fund, and Brennen Hydzik to launch seven mini food pantries during the Covid Pandemic.

SPC Youth painted three of the seven boxes in the Fall of 2020 and helped to stock the pantries last Holy Week. Please support this project and bring non-perishable food items to church on Youth Sunday.

Don't forget to bring your donations to church on Sunday, February 27. This is our only collection day. Youth will be collecting at each of the church entrances. Collection bins will also be in all four entrances to the church prior to Youth Sunday.

Thanks! -- SPC Youth Ministry

Here is a list of needed items:

- hearty soups
- canned tuna, chicken, beef
- peanut butter & jelly in plastic jars
- boxed rice
- instant mashed potatoes
- dry pasta
- soup mixes
- mac and cheese
- cereal and oatmeal
- pancake mix (only requires water)
- syrup
- applesauce
- granola bars
- canned or dry fruit
- canned potatoes
- canned franks and beans



We would like to invite any church member who desires to lead worship to do so by visiting our website and signing up to read our liturgy on Sunday mornings. This is an amazing way to be involved in sharing the message of Christ with those attending worship.

Liturgical elements include: Call to Worship, Corporate and Silent Prayers of Confession, Assurance of Pardon and the Affirmation of Faith. The liturgy is given to those who volun-

HELP TO LEAD WORSHIP

teer before Sunday so there is plenty of time to review and practice. The only other requirement is that you arrive 15 minutes before the service so we can review the process with you.

If you have any questions, please contact Sharon Barber in the church office. Sign-ups are available on our Events page. Thank you!



By Mike Creamer
Youth Director

We've had a chilly but busy few months since November. After the temperatures dropped, we moved most of our energy inside. Despite the cold weather, we took our high schoolers to Laurelville for the first time in two years. The mud was as cold as we remembered (picture above)! We also were glad to get together for our Christmas party over at the Faith House, exchanging gifts and playing some games. And just the other week we got together to go bowling.

There are two big things that have started recently we're excited about. First, the evening worship services have been a great opportunity to let our teens share about their faith with the congregation. We're stoked that it's been received so well! And second, for the first time in years we relaunched high school breakfasts on Thursday mornings. It's been a blast having teens get up BEFORE school to meet together to talk about life and faith. Mark Gensheimer has been our surprise guest at breakfast, all because as he was driving by one morning he saw us together and "just had to stop in." Now he's an honorary high schooler.

We've also been thrilled about how involved our teens have been in worship this year. We just elected two new youth deacons, Zea Juarez-Safran and Will Campbell, and we're grateful to have them leading this year. There has also been a lot of involvement helping with the Tech Team on Sunday mornings, so a huge shout out to Kate, Gus, Brendan, and Caleb! We've even had teens help to lead liturgy during worship--thanks Susanna! Our hope is always to see our church reflect all of our congregation, so the more we can get teens involved in leadership the better.

Covid has brought its challenges to be sure, but as we've all been learning and relearning, community and family is about adjusting together. We're hopeful for what the next few months will bring!



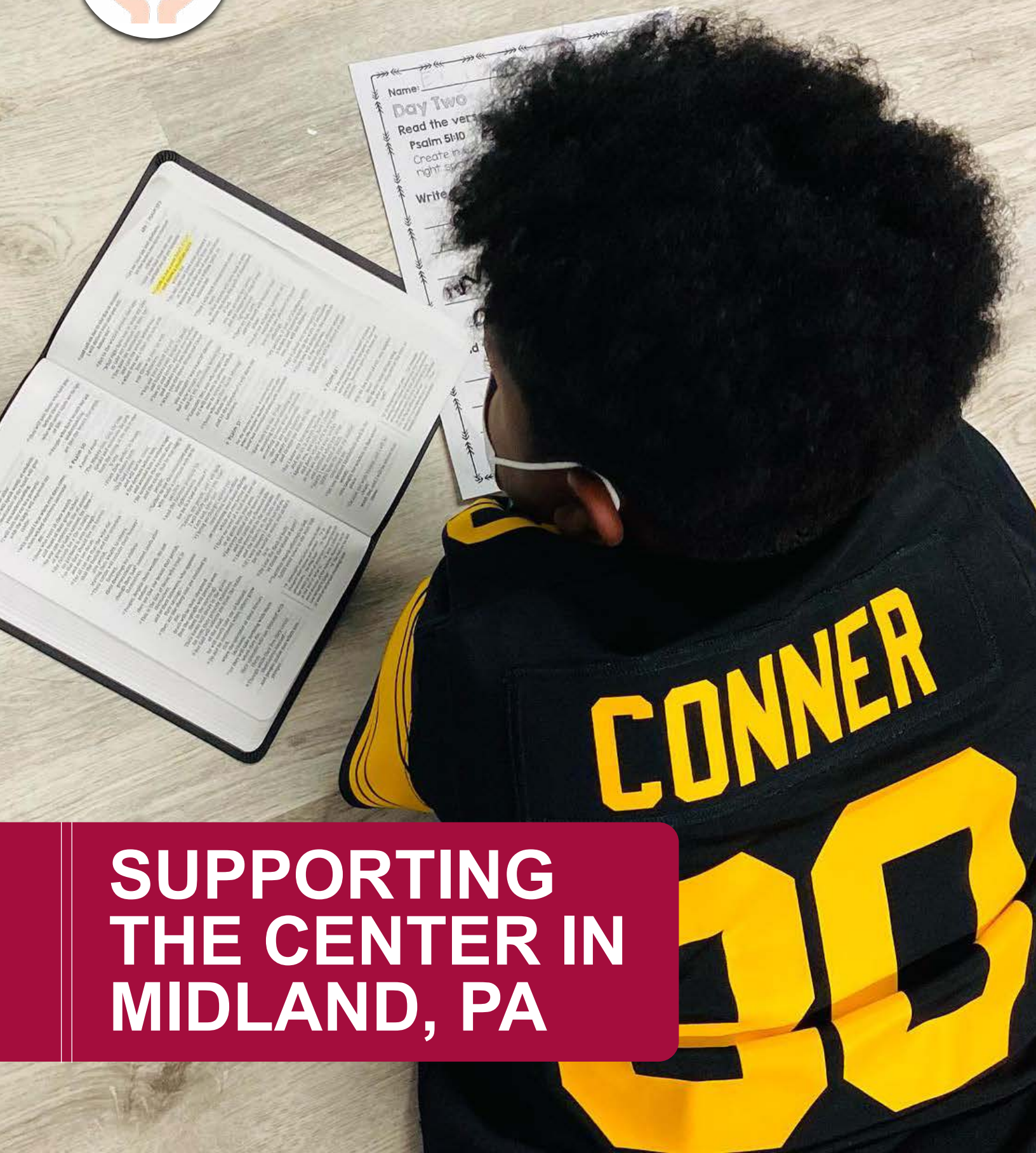
UPCOMING EVENTS

Youth Sunday | Feb. 27

Come see our teens lead worship, and hear from our seniors Sophie Gledhill and Will Campbell as they preach!

All-Youth Service Day | March 5

Open Hands Ministries



**SUPPORTING
THE CENTER IN
MIDLAND, PA**

Our church's support to mission has enabled us to provide funding for projects and programs at The Center the last two years. Following is background information on their community involvement, written by Jen Miller, Executive Director, at The Center:

There is a small town at the border of Pennsylvania and Ohio named Midland, PA. It is a town much like other formerly great towns which thrived due to the steel industry, and felt the sharp sting of joblessness as the industry died.

Over 12 years ago the pastor of Four Mile Presbyterian Church started making some connections with the leaders of this town. It was then that God started putting on our hearts a desire to reach out to and extend our support to this community.

The reality was that while not far in distance, our communities were starkly different in resources. So, it began with a work day renovating a playground, and led to other such community partnerships as planting flowers with the West End Renaissance Committee and being a part of community events.

Our desire to make an even bigger impact led us to running our first camp in August of 2010 for kids in kindergarten through 8th grade. We were thrilled as the camp grew each day serving nearly 70 kids by the week's end. And this is when we fell in love with Midland and the people who call it home.

It was then that God put on our hearts a definitive call to become a permanent part of this awesome community. As we prayed about it, God made it all so clear. In fact, I remember driving through the town one day and seeing a group of people. The thought I had at that time was, "I truly can't wait to get to know you!" God planted a seed of deep love for people we didn't yet know, and we knew we were about to take the greatest leap of faith we ever had.

In September of 2011, we were able to purchase a building, and opened a child care center three months later. After a year of renovations to the other floors, our food and clothing banks made their debuts in December of 2012. And after much training, praying, and recruiting, we opened our doors to the children and youth of the community in January 2013, where we help them with homework, serve them a meal, and get to show them God's amazing love each week.

Our mission is to equip and empower generations through Christ. We seek to accomplish this mission by focusing on the key areas of youth development, adult and family services, mentoring, and community development.

To date, more than 1300 kids in kindergarten through high school, as well as college students, have entered our doors



and new ministries continue to bloom. In addition to our after-school program, we also provide enrichment classes in cooking, dance, acting, boxing, hip hop fitness, hiking, and music, a STEM program, and educational off-site trips. We continue to provide safe spaces through a week-long Basketball and Super Week Camps, as well as our lunch program and mini-camps each week throughout the summer.

We have also had the privilege of being the first expansion site of Communicycle, whose mission is to reach kids with the Gospel through fixing/restoring bikes. Our call to reach out and equip, encourage & empower the women of this matriarchal community has led to the development of wholistic women's health ministries, events, Bible studies and mentoring. We can't wait to witness how their homes & communities will be transformed as God rebuilds their lives.

Our community based one-to-one mentoring program with our partners at Family Guidance has matched over 20 children with adult mentors, and our site-based peer mentoring program matches high school students with a child 4-7 year olds serves 50-72 students each year. We practice a group mentoring model throughout the week for kids 4-18 years old at The Center. We believe so strongly in the power of mentoring and have seen it altering the trajectory of so many young lives.

We were excited and expectant as we journeyed into the next step of branching out as our very own non-profit ministry in 2018 and experienced even greater growth and impact than we could have imagined! Our mission is to equip and empower generations, but we know we cannot do that alone. Therefore one of our greatest efforts has been pursuing partnerships within the community such as the Midland Borough, Midland schools, YMCA, nonprofits, local churches, and residents. For us, this is one of the most exciting parts of what God is doing through The Center-working together with others to tap into the vast potential of these kids and adults that just needs a little support and encouragement in order to thrive.





FAITH HOUSE MEN'S GROUP

By Mark Gensheimer, SPC Member

The Friday morning Faith House Men's Group served about 40 people at the Family House (Shadyside location) on Monday, December 20.

Family House provides a special "home away from home" for patients and/or their families who are in Pittsburgh seeking medical treatment. By offering convenient, affordable housing in a home-like environment, Family House reduces the emotional and financial stress for people facing a medical crisis in a city where they may be strangers. Family House is always looking for volunteers to bring and serve a warm meal to those who are staying with them.

The most meaningful part of this volunteer opportunity is spending time visiting with these patients and their friends and families. Everyone has their own "story" and they really like sharing it with you. It's a perfect way to share the love of Jesus just by being a good listener.

Should you wish to ever serve a meal, just go to the Family House website: [click here](#). They are very well organized and welcome any and all volunteers.

MGM & THE DR UPDATE

Long time members, David and Barb Swan, who moved away from the Sewickley area in 2021, were strong (and still are) supporters of one of our mission partners located in the Dominican Republic. They recently returned from a trip to continue supporting Meeting God in Missions at Del Rey Medico. Here is an excerpt from Barb's correspondence with our Mission Committee:

"David and I just returned from a week in the DR with MGM. We had two clinics with Dr. Yasquina during the week where we staffed the pharmacy. We had several nurses who helped and it was a blessing to see how readily they worked and supported Dr. Yasquina. It was a great week, with lots of new ideas of how we can continue to support Dr. Yasquina in her ongoing mission. The process for establishing a

CHRISTMAS FOOD BASKET THANK YOU

When you donate to our Christmas Food Basket program every November, the impact reaches those in our community who can't always afford to buy groceries during the holiday season. We often receive thank yous from those at the receiving end of the baskets and wanted to share a few with you. Again, thank you for continuing to keep this program going year after year.

"Thank you very much for the wonderful Christmas food basket. It will all be used! We are so lucky to live in this generous and kind community. Thanks again and God Bless."

"Dear Sewickley Presbyterian Church: Thank you for blessing our family with food this holiday season! Merry Christmas & Happy New Year."

"I wish to thank every one for all the help in getting my Christmas box of food ready for me. Especially Kathy and Tom delivering it in all the rain. Thank you. You are truly a blessing."



non-profit in the DR is completed -- we are just waiting for final approval from the government. Once that is completed, we have funds in hand to purchase a 4-wheel-drive vehicle for her, to facilitate reaching more remote locations. Currently, Dr. Yasquina borrows her fathers truck."

Help Our Neighbors!

Neighbors in Need collection is starting in March. Read below (or visit our website) to find out what is needed & how to donate.



Our March collection for Neighbors in Need focuses on personal care items. The items listed here were specifically requested by our mission partners: Center for Hope, Sewickley Community Center, The Ladle, and the Sewickley YMCA's Little Free Pantries.

As you do your shopping in the coming weeks, please take the list (*to the right*) with you and pick up some items to share with our neighbors.

Please place items in the bins labeled "Neighbors in Need" inside the four church entrances.

Financial contributions are also welcome.

Online: <https://sewickleypresby.org/give/>

By check to 414 Grant Street, Sewickley 15143.

Monetary donations allow us to supplement the donated items. Neighbors in Need also has an Amazon wish list where items are shipped to church member Anneliese Perry: <https://smile.amazon.com/registries/custom/35AC3O4UMCJS4/guest-view>

Contact any member of the SPC Neighbors in Need committee with any questions: Glenis Levine, Nancy Merrill, Stephanie O'Kane, and Anneliese Perry.

SHOPPING LIST (not travel size)

- Baby wipes
- Baby powder
- Small hand sanitizers
- Shampoo
- Ivory bar soap
- Toothbrushes
- Toothpaste
- Deodorant
- Body lotion
- Hand lotion
- Conditioner
- Feminine products
- Shaving cream
- Razors
- Dish detergent (medium size)
- Laundry detergent (medium size)
- Child and adult masks
- Diapers
- Sunblock



Sewickley Presbyterian Church

LIVE · GROW · SERVE

414 Grant Street

Sewickley, PA 15143

www.sewickleypresby.org

Dated Material

PLEASE EXPEDITE



LENTEN STUDY led by Mike Creamer

C.S. Lewis was one of the most influential Christian thinkers of the 20th century.
Join us during Lent for a deep dive into some of his most famous works
and learn about our faith from a new perspective.
Check your mail/email for details next week.